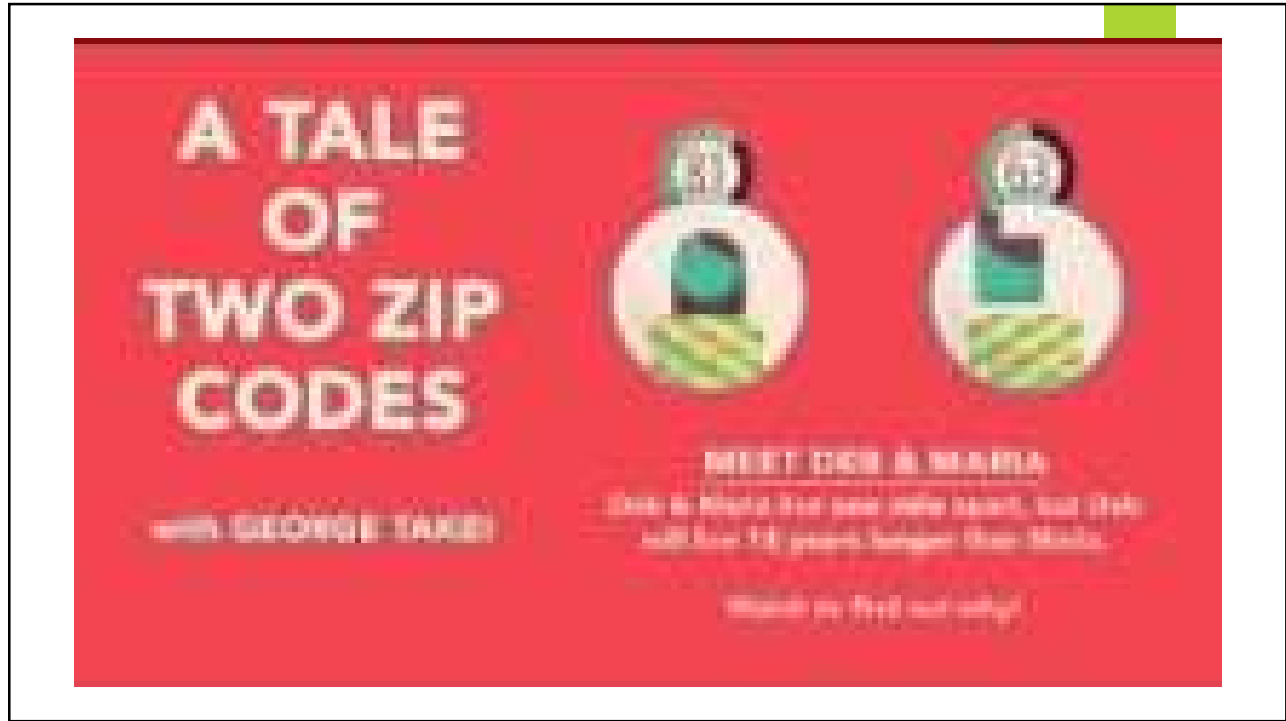




1



2



3



4

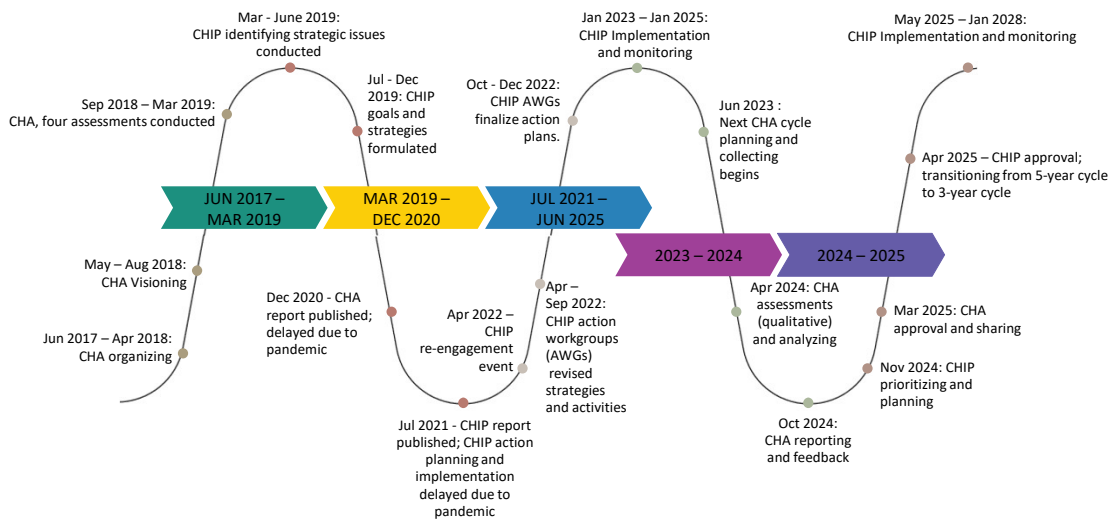
## COMMUNITY HEALTH IMPROVEMENT PLAN (CHIP)

- A community action plan that provides guidance to Public Health, its partners, and stakeholders for improving the health of Stanislaus County
- Identifies **health equity as a guiding principle** to address differences in health outcomes
- Is informed by the findings and data from the Community Health Assessment (CHA)
- Can be used to prioritize existing activities and set new priorities



5

## 2017-2025 and Beyond CHA-CHIP Journey Map



6

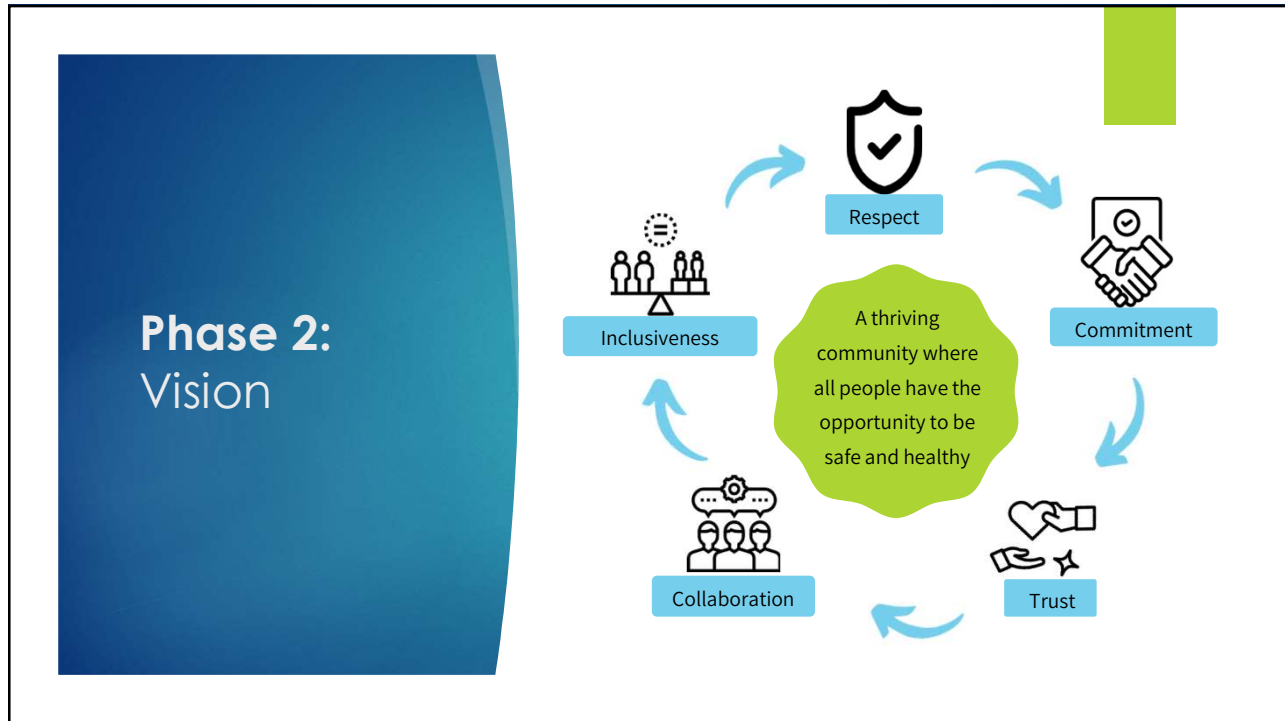


7

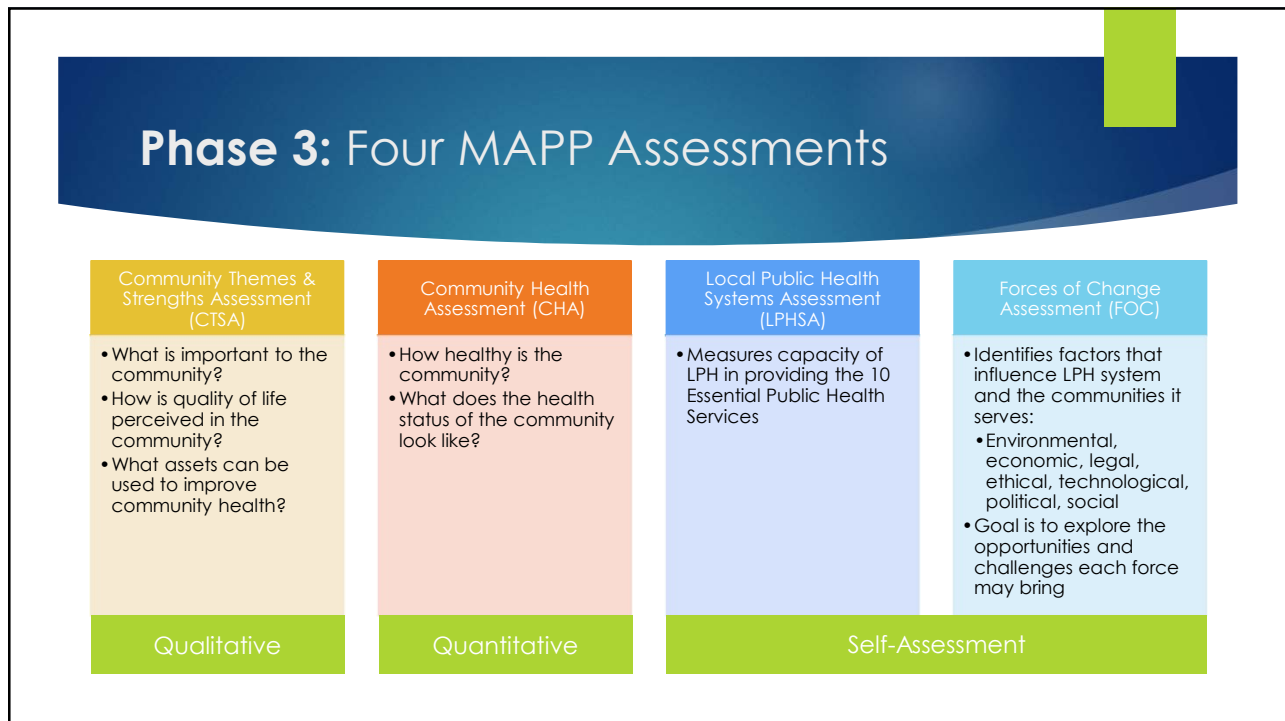
### Phase 1: Organizing for Success & Partnership

- Area Agency on Aging
- Behavioral Health & Recovery Services
- Catholic Charities
- Center for Human Services
- CSU Stanislaus
- El Concilio
- Economic Development & Workforce Alliance
- Golden Valley Health Centers
- Health Net
- Health Plan of San Joaquin
- LGBTQ+ Collaborative
- Livingston Community Health Centers
- MoPride
- NAACP
- Parent Resource Centers
- Sierra Vista Child & Family Services
- And more...

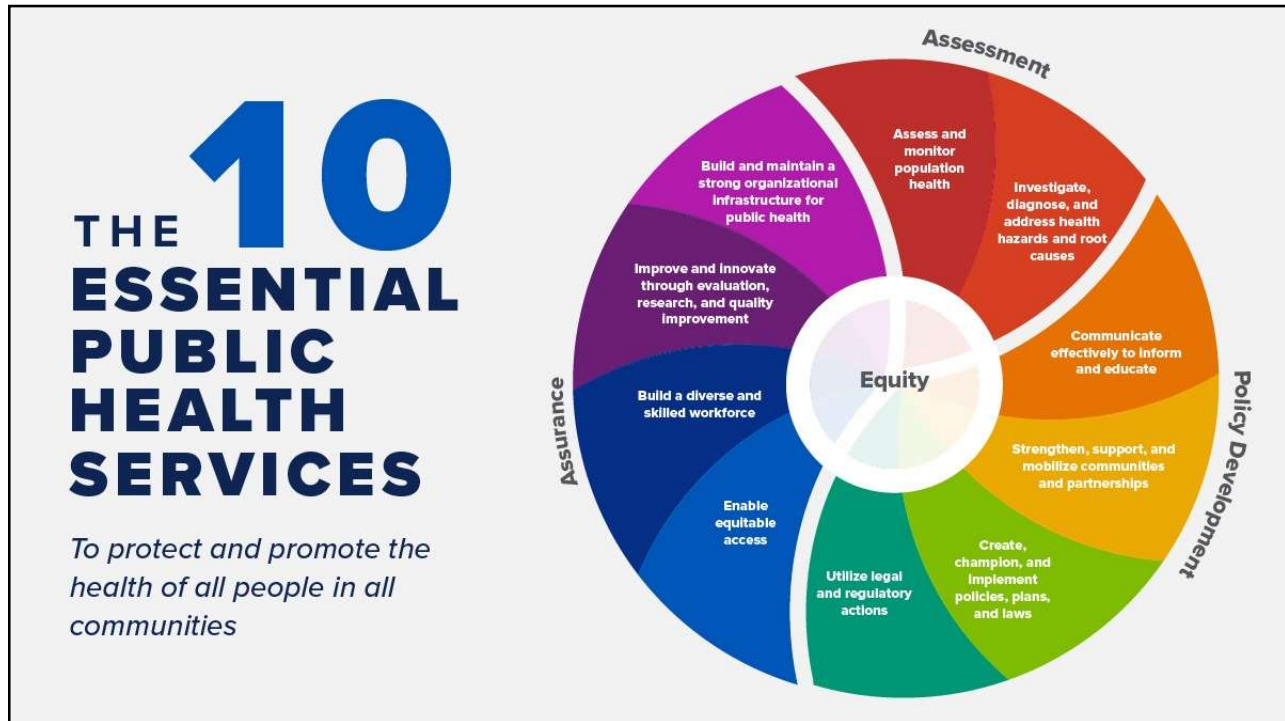
8



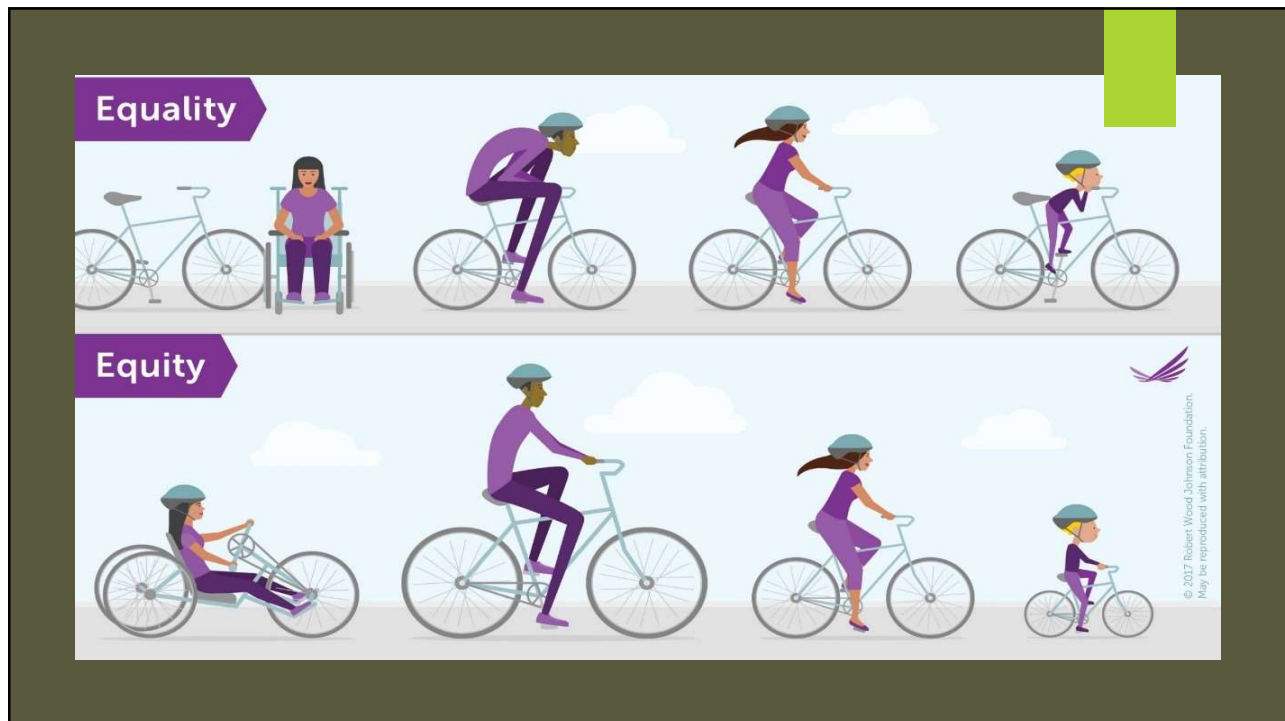
9



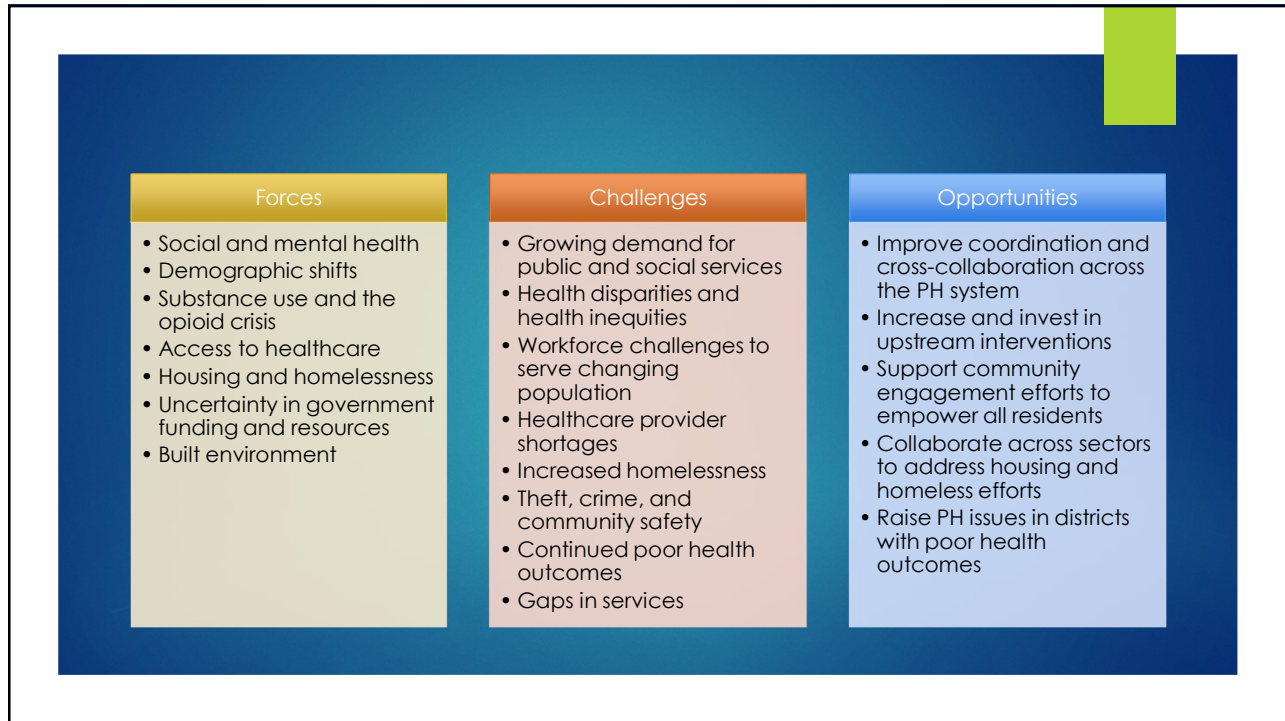
10



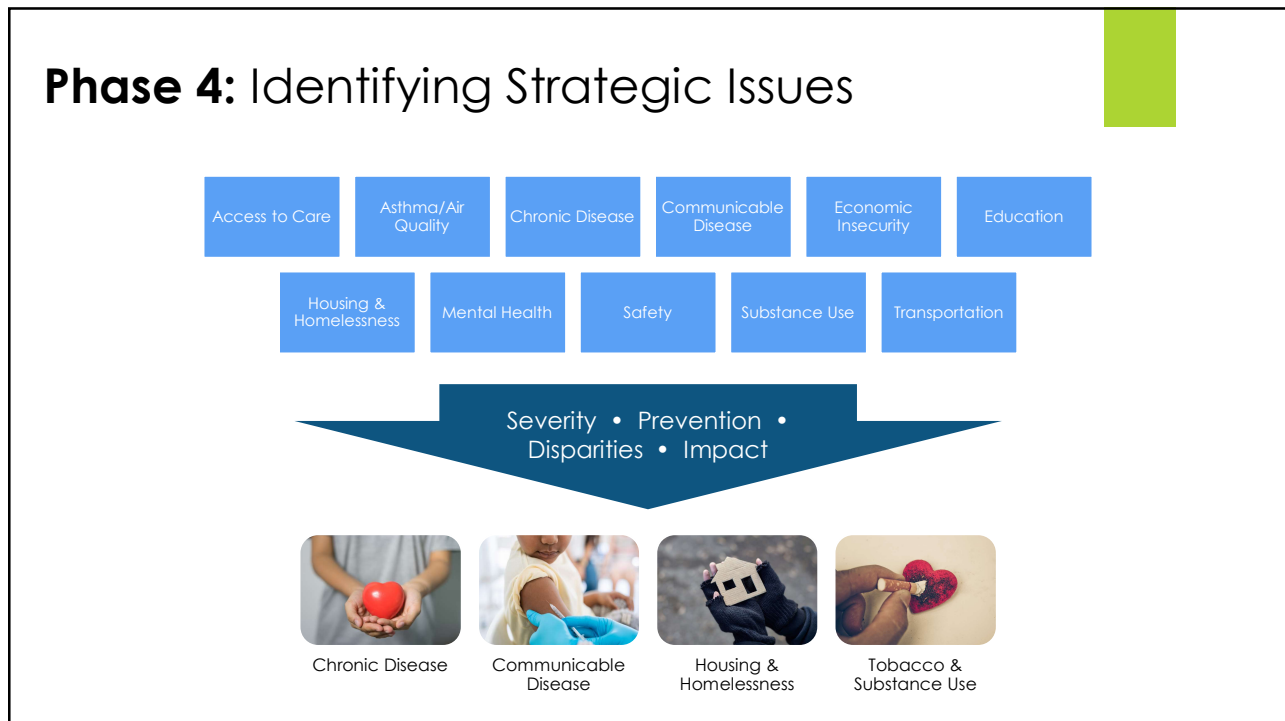
11



12



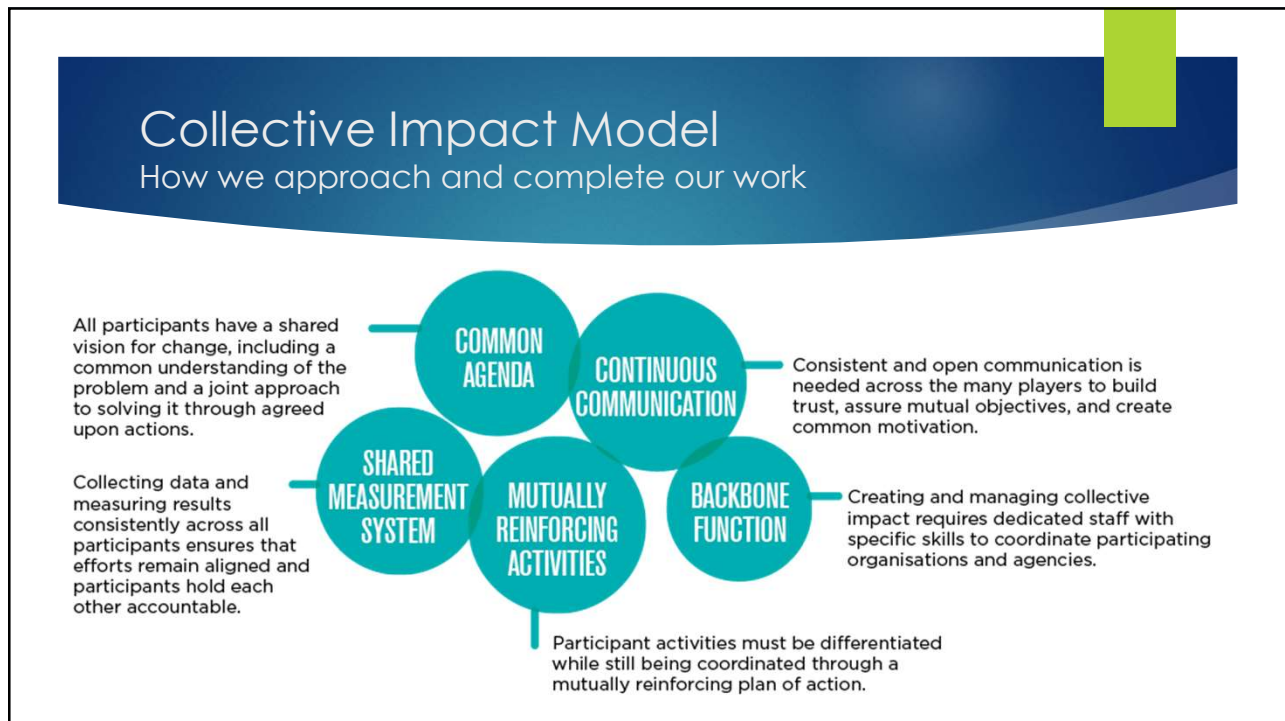
13



14



15



16

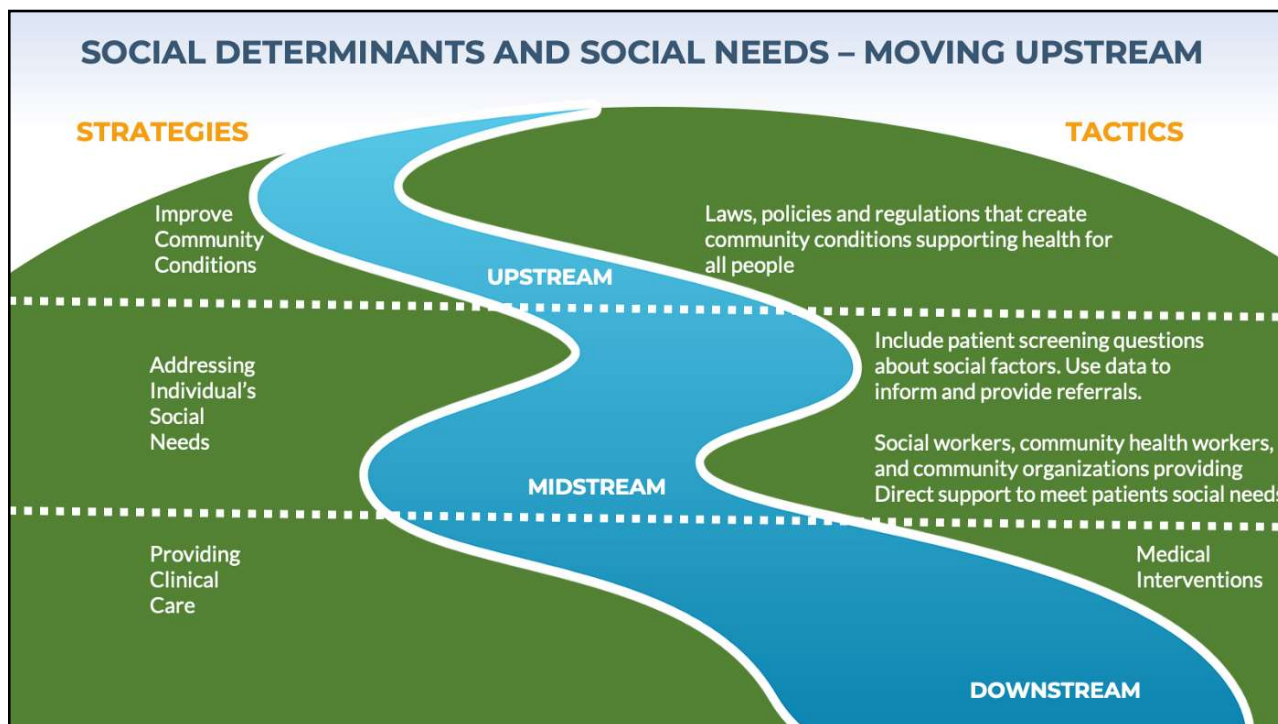




17



18



19

## CHIP FOCUS AREAS

<p><b>Chronic Disease</b></p> <ul style="list-style-type: none"> <li>All people will have the opportunity to live a long and healthy life</li> </ul>	<p><b>Communicable Disease</b></p> <ul style="list-style-type: none"> <li>A community with adequate prevention against communicable disease and equitable access to treatment</li> </ul>	<p><b>Housing &amp; Homelessness</b></p> <ul style="list-style-type: none"> <li>All people will have a safe and affordable place to live</li> </ul>	<p><b>Tobacco &amp; Substance Use</b></p> <ul style="list-style-type: none"> <li>A community free from the harm of tobacco and substance use</li> </ul>
--	--	---	---

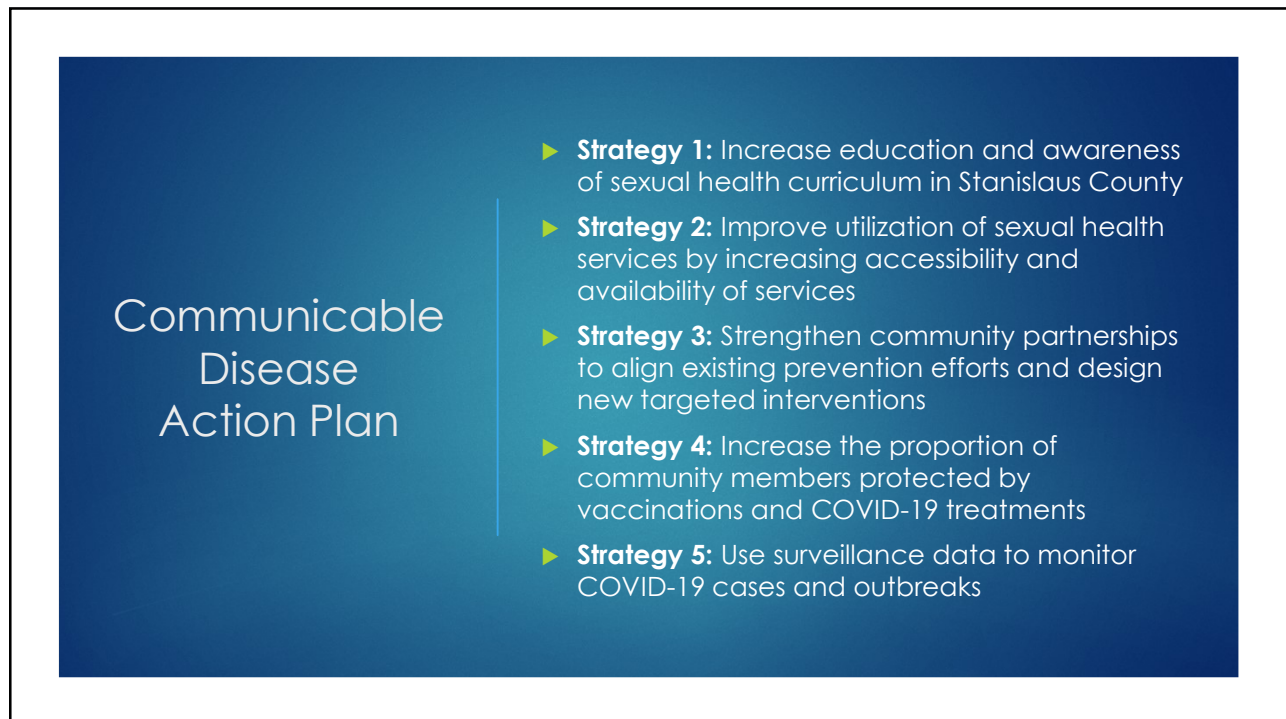
20



Chronic Disease  
Action Plan

- ▶ **Strategy 1:** Improve the coordination among chronic disease prevention partners
- ▶ **Strategy 2:** Increase access to healthy food and opportunities for physical activity
- ▶ **Strategy 3:** Promote health equity

21



Communicable  
Disease  
Action Plan

- ▶ **Strategy 1:** Increase education and awareness of sexual health curriculum in Stanislaus County
- ▶ **Strategy 2:** Improve utilization of sexual health services by increasing accessibility and availability of services
- ▶ **Strategy 3:** Strengthen community partnerships to align existing prevention efforts and design new targeted interventions
- ▶ **Strategy 4:** Increase the proportion of community members protected by vaccinations and COVID-19 treatments
- ▶ **Strategy 5:** Use surveillance data to monitor COVID-19 cases and outbreaks

22

## Housing & Homelessness Action Plan

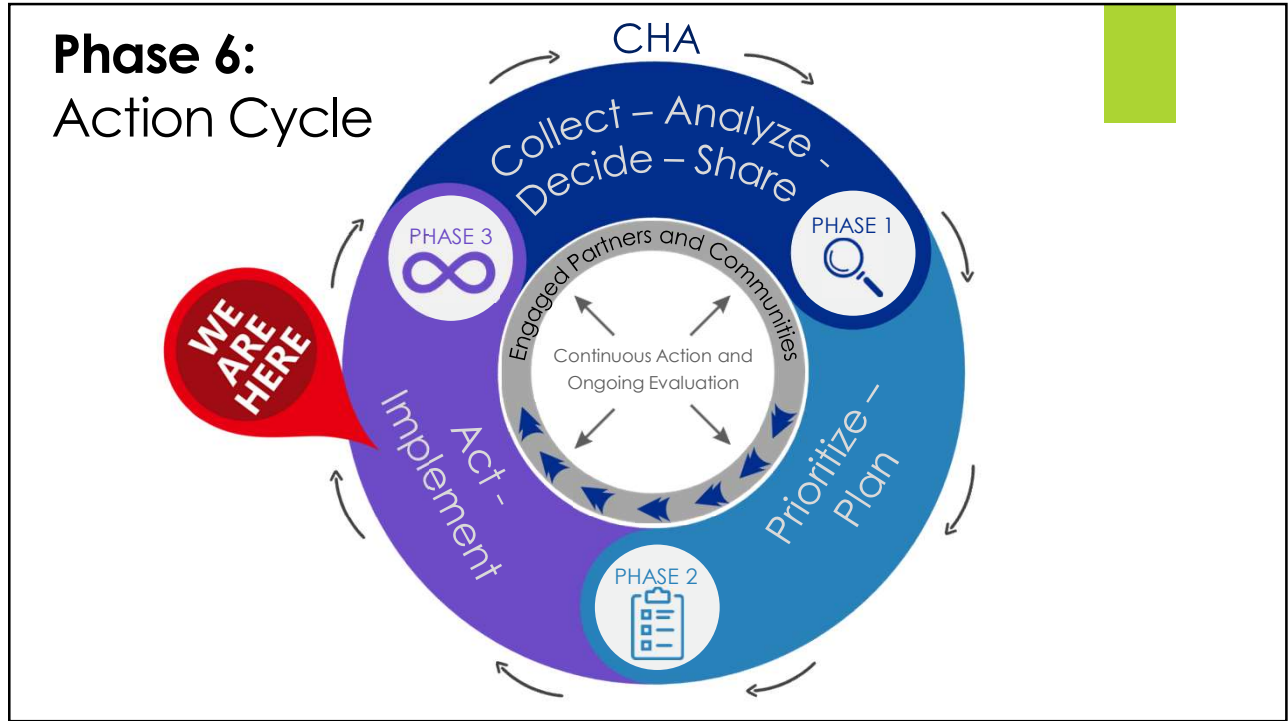
- ▶ **Strategy 1:** Accurately identify the homeless population and align existing housing and homeless outreach plans and strategies across Stanislaus County
- ▶ **Strategy 2:** Address early life factors that place youth at risk of homelessness in adulthood; as well as engage local systems in a shared approach to prevent youth from becoming homeless
- ▶ **Strategy 3:** Expand and provide housing services and coordinated approaches to increase housing stability and prevent a return to homelessness

23

## Tobacco & Substance Use Action Plan

- ▶ **Strategy 1:** Adoption of policies across multiple jurisdictions and unincorporated areas limiting access and exposure to nicotine, THC, and alcohol products
- ▶ **Strategy 2:** Completion of a fully incorporated and widely shared Communitywide Asset and Gap Analysis for cessation, addiction, substance use, and mental health services
- ▶ **Strategy 3:** Expand implementation of mental well-being and substance use prevention programs in the community, with specific attention to schools and youth-based programs

24



25

**Join us on  
May 4<sup>th</sup>!**

EMAIL [CHIP@SCHSA.ORG](mailto:CHIP@SCHSA.ORG) TO RSVP

THURSDAY, MAY 4<sup>TH</sup>  
8:30-11:15 AM  
REDEEMER CHURCH, MODESTO

26